



LEE CHESNEAU'S

MARINE WEATHER

Teaching Marine Weather Self-Reliance



www.weatherbylee.com
lee@weatherbylee.com

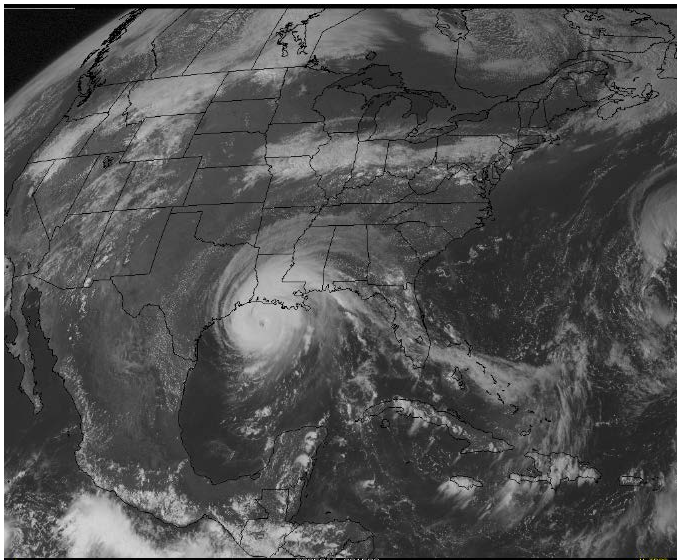
Lee Chesneau's 3-Hour (\$65.00) prepaid educational workshop:

"Tropical Cyclone (Hurricane) Basics & the 1-2-3 Rule for Avoidance Workshop", scheduled for: **0800-1100, Saturday, September 24th,**

Waterford Room of the South Shore Harbour Resort & Spa: See in-water SWIBS educational workshop page for registration details, click on below:

(<http://swibs.globalonlinepublishing.com/2016-educational-workshops/>)

- This seminar/workshop will discuss the basics for hurricanes & their impacts in the Gulf of Mexico, the North Atlantic & the Eastern North Pacific Oceans (Mexican West Coast), & sometimes Hawaii. Tropical Cyclones are different in size & dynamics than their middle latitude cousins (both provide their challenges to all boaters).
- There will be an overview of Tropical Cyclone basics & their uniqueness as there are significantly different than most low pressure systems that dominate the planet in size, shape & the sensitive environment necessary for them to form, intensify, & maintain themselves, literally day by day if not hours at a time,
- The Gulf of Mexico & North Atlantic & Tropical North Eastern Pacific Oceans are not limitless.



- There are also hostile environments that these tropical weather systems encounter frequently, whether transiting over cooler waters or the entrainment of drier air, moving over land, & experiencing strong winds aloft.
- Sometimes there is a transformation from tropical to extra-tropical (non-tropical) that sometimes results in a new more powerful storm system.

- There will be an overview of Tropical Cyclone impacts on the coastal and nearby land interface where boats are frequently at if not sailing at sea (e.g. marinas & anchorages)
- More importantly for boaters, the lead time for avoidance & strategies will be different in time & space over open high seas waters than over the coastal areas.
- Thus we introduce the 1-2-3 Rule for avoidance, concentrating on the 34 knot wind radii.
- We will also breakdown the Tropical Cyclone Message (TCM) for interpretation, clarity, & application. The Hurricane Season in the Eastern North Pacific (begins May15th) is earlier than the North Atlantic (began June 1st) ... both end 30th of November).

The hands on portion of this workshop is a practical exercise that will include:

- Interpreting the advisory message issued every 6 hours known as the Tropical Cyclone Message (TCM) & constructing a “Danger Area to Avoid”
- A practice walk-through exercise, applying the 1-2-3 Rule for the Gulf of Mexico & Caribbean Sea.

The environmental conditions that are necessary for tropical weather systems’ development & behavior are VERY different from those of middle latitude (30-60 degrees) origins as well, so this particular seminar will very well complement Lee Chesneau’s hour-long free seminar that follows:

Assessing Your Marine Weather Skills...An Introduction to the at Sea-level Surface Pressure Chart”, scheduled for:

Saturday, September 24th, 1200-1300 “Waterford Room”, South Shore Harbour Resort & Spa:

For in-water SWIBS page for free seminar details, click on below:

[\(http://southwestinternationalboatshow.com/2016-seminar-series/\)](http://southwestinternationalboatshow.com/2016-seminar-series/)

For more in knowledge & information on surface weather & related charts, do consider the follow-on prepaid workshop:

“The at Sea-level Surface Pressure Chart Workshop”, scheduled for;

Sunday, September 25th 0800-1100 , “Amphitheater Room”, South Shore Harbour Resort & Spa:

Again, see In-water SWIBS educational workshop page for detailed description & registration, click on below:

[\(http://swibs.globalonlinepublishing.com/2016-educational-workshops/\)](http://swibs.globalonlinepublishing.com/2016-educational-workshops/)

In addition, please also consider Lee's other hour- long free seminars, scheduled for;
**Saturday, September 24th, 1400 &1600, "Waterford Room", South Shore
Harbour Resort & Spa:**

For in-water SWIBS page for free seminar

details, click on below:

[\(http://southwestinternationalboatshow.com/2016-seminar-series/\)](http://southwestinternationalboatshow.com/2016-seminar-series/)

The follow-on companion prepaid educational workshops continue for your additional
considerations:

**Sunday, September 25th, (1130-1430 & 1500-1800),
"Amphitheater Room", South Shore Harbour Resort Spa:** See in water SWIBS
educational workshop page for descriptions & registration details, click on below:
[\(http://swibs.globalonlinepublishing.com/2016-educational-workshops/\)](http://swibs.globalonlinepublishing.com/2016-educational-workshops/).